

# evo SUITES®

*evosuites.com*

PRECISION . SUSTAINABLE . ANYWHERE

Strategic Collaboration :



Thoughtfully designed modular suites & homes installed move-in ready, complete with modern Scandinavian design furnishing, TOTO quality bath fixtures, KING KOIL sleep comfort, REC solar day power, and 3M tap ready drinking water.

- Advanced Home Technology - smart TVs, thermostats to keyless locks. Smart Sensors lighting & dimmers throughout.
- Built on the foundation of sustainable design & construction to ethical maintenance free upkeep.
- \* Designs to meet the lifestyle aspirations of today whilst building in mind the environmental sustainability for generations to come.

## evo 2 - Living



This is a patented product and imitation is prohibited.

#ETHICAL SOURCING #MINIMALISM #SUSTAINABLE #COMPACT LIVING  
#SUN ENERGY #RELOCATABLE #FLEXIBLE-HOUSING #SUSTAINABLE SOURCING  
#ENVIROMENTAL FOOTPRINT #CIRCULAR DEVELOPMENT #CHEMICAL FREE








## Why are EVO Suites so Advanced & Sustainable ?

### Built for deconstruction, not demolition

Prefabricated & Modular buildings all but eliminate waste generated from demolition. Modular building systems are a prime example of recycle, repurpose and reuse.

EVO Units are Factory prefabrication, allowing **10 -15 day** on-site assembly with very low environmental impact, **eliminating construction noise, dust,** and building materials discarded on project site. Most importantly most components are recyclable.

### Just a few of the key standard features you will find with EVO Suites:

- Smart Air Flow  Building Design ( Limit AC Usage)
-  **V-KOOL** Smart window cooling &  **HUPER OPTIK** , to reduce AC power consumption during peak sunlight hours.
-  EVO specially chosen smart low wattage use electrical appliances like LG Dual Cool Eco Inverter AC units. 70 Percent more efficient and 40 percent more cooler with variable watt control. Minimum noise pollution for compressor and interior unit. Built in air purifier
-  **REC** Solar roof mount panels installed on each unit. \*(Hybrid Design) Europe's most advance solar company



Solar Roof Top Water Heater included in Off-grid Suites.



#REVERSE ENGINEERING

#NO NOISE-POLLUTION

#SUN POWER

#HYBRID HOMES

#MODULAR CONSTRUCTION

#OFFGRID LIVING

#CLOSED-LOOP CONSTRUCTION

Achieving an environmental harmony has become an increasingly pressing need for human beings.

**DESIGN - PRECISION**



\*Roof mounted solar panels



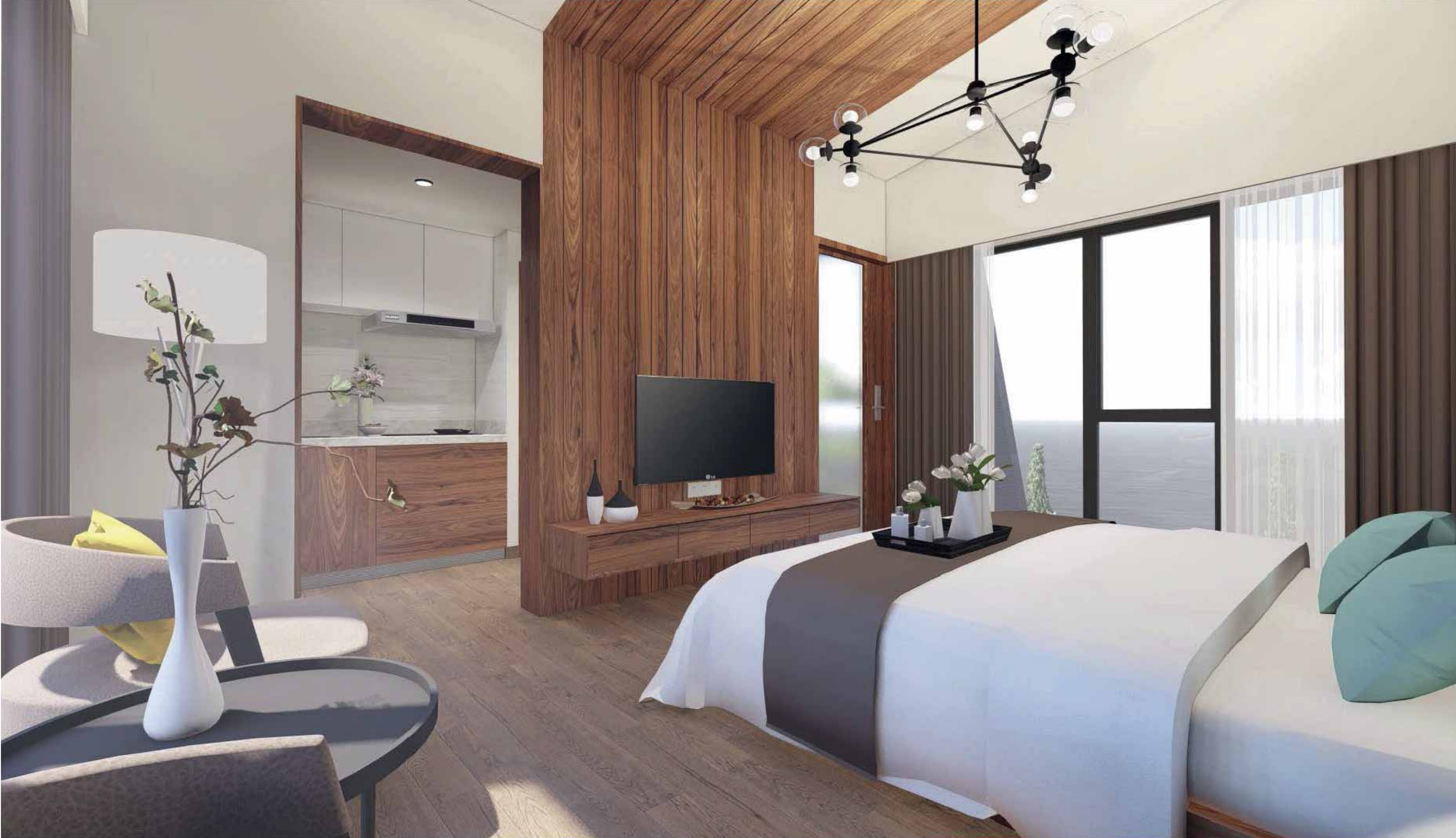


#### PRODUCT DESIGN

The evo 2 was designed by a master in architectural art design, and based on modern minimalist design with an inspiration that "Art comes from Nature." the structural shape, spatial organization, decor, etc. were used to form a rhythmic abstracted beauty which will inspire people's appreciation during observation, thus offering you a special living experience.









FEATURES - QUALITY - CRAFTSMANSHIP





\*Off-grid power solar storage power pack available in all evo models.

## evo 2 + Premium

### INNOVATIVE EXTERIOR

The unique and artistic exterior has an upgraded visual effect to a whole new level.



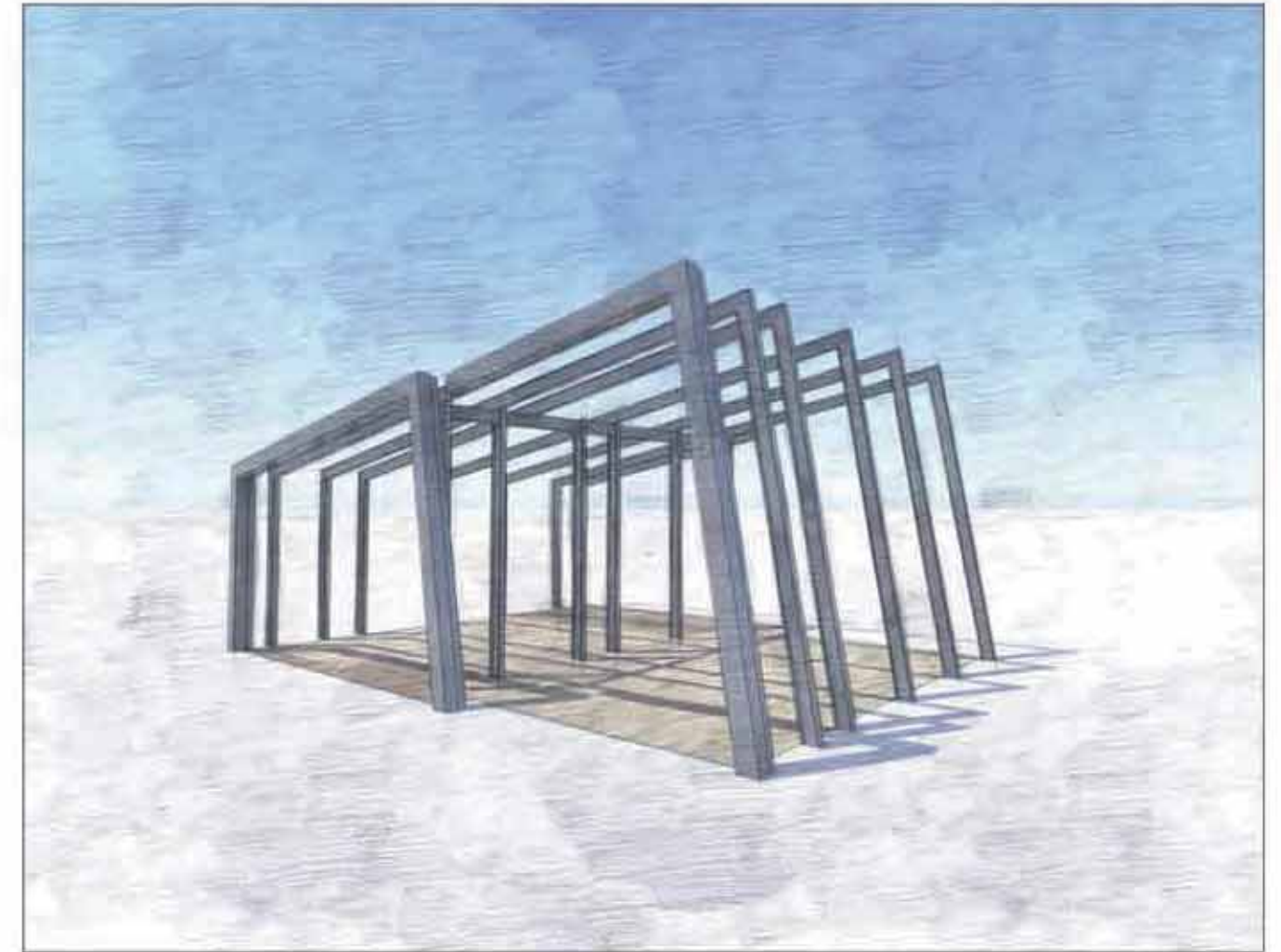
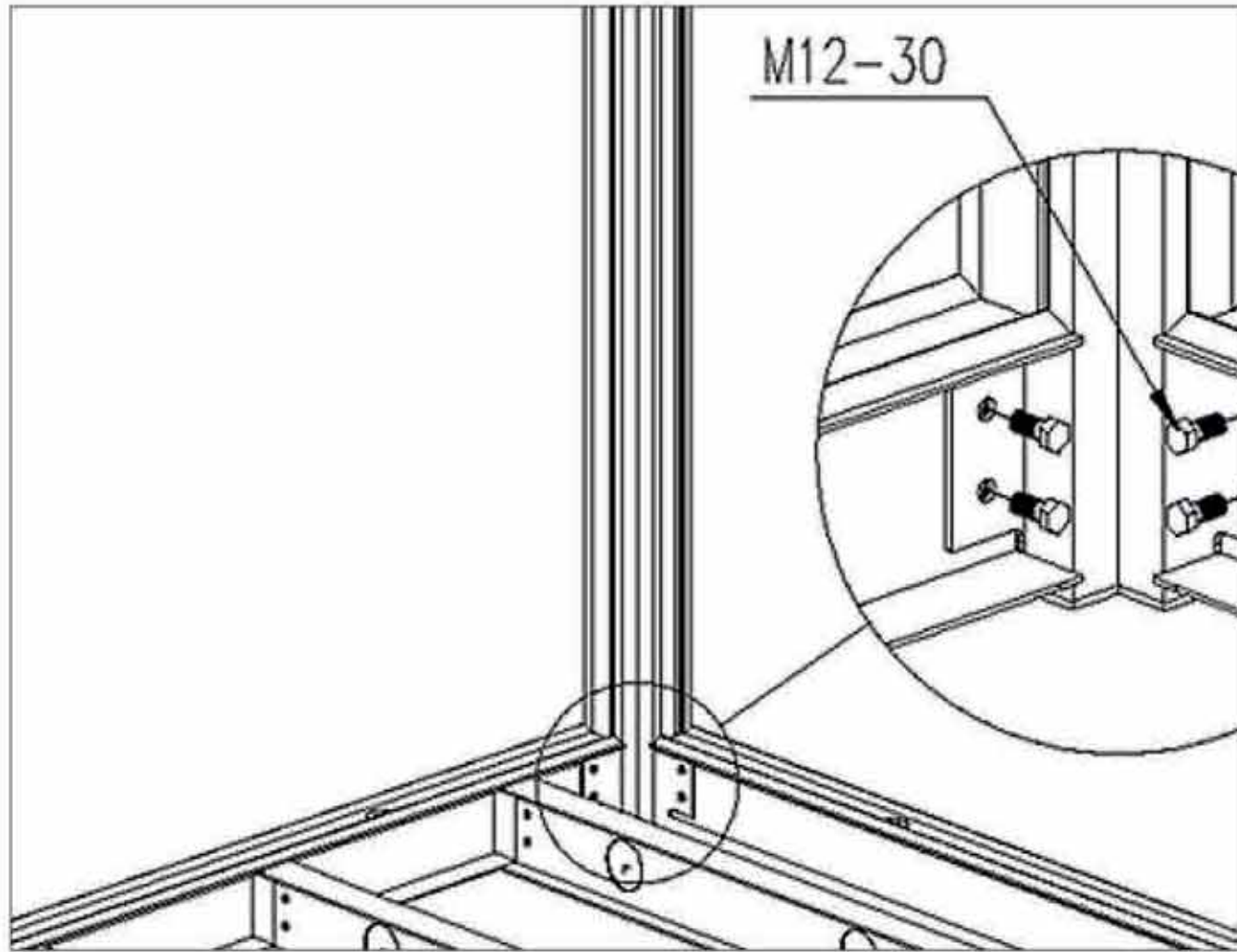
### SPACE HEIGHT

The highest point of the bedroom is 3.8-meter-high, offering a more comfortable space.



**SUPER-LUXURY BATHROOM**

The spacious bathroom is equipped with TOTO quality bathroom accessories including a large bathtub where you may take a cozy hot shower.



### **AVIATION METAL ALLOY STRUCTURE**

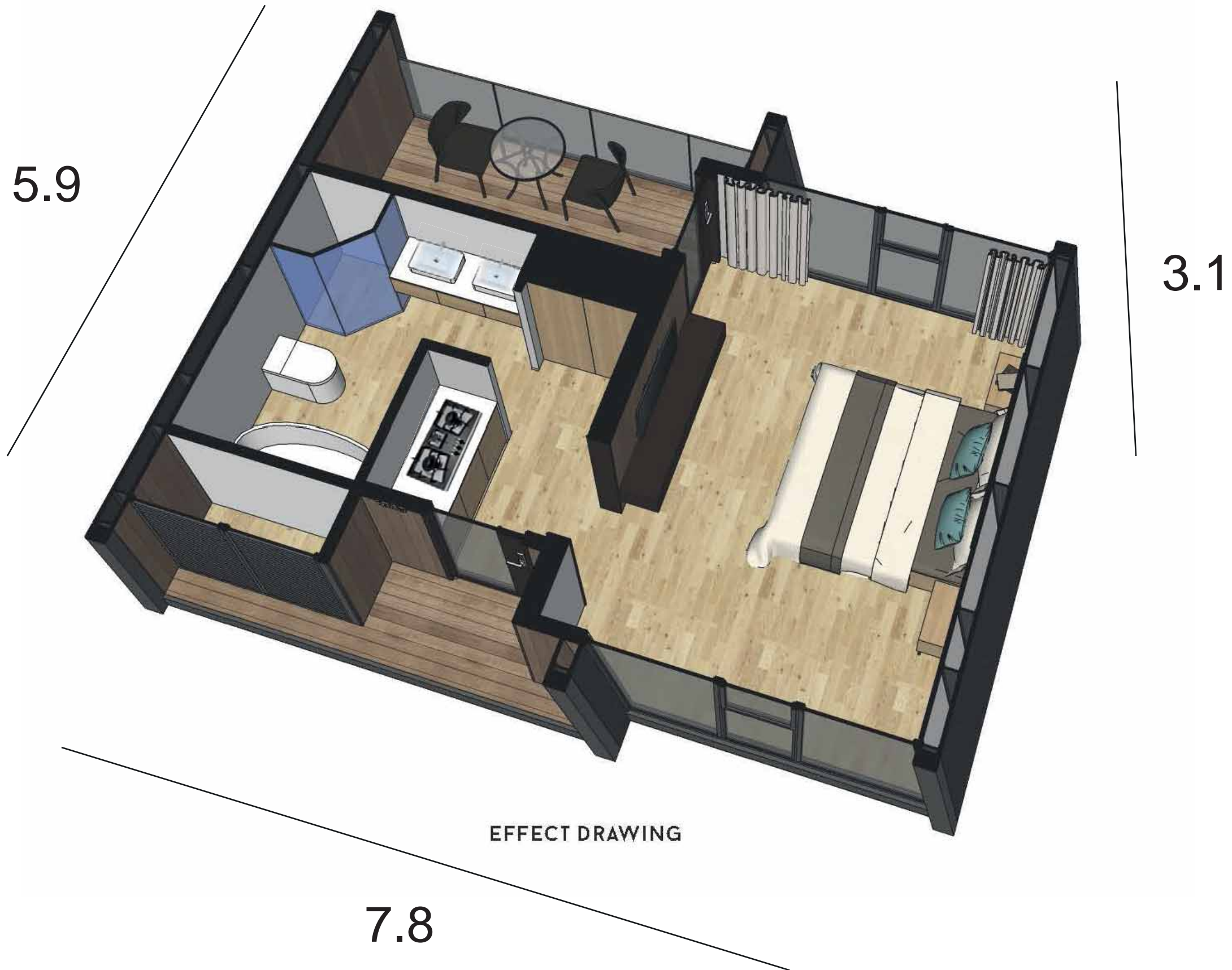
The aviation metal alloy structure installed with high-strength bolts is adopted in the frameworks of the EVO 2 to ensure a higher level of integrity. The wallboard is made of advanced composite PVC, engineered OSB, Honeycomb sandwich board panels, integrated ones which may be lifted by hand to save on build time.



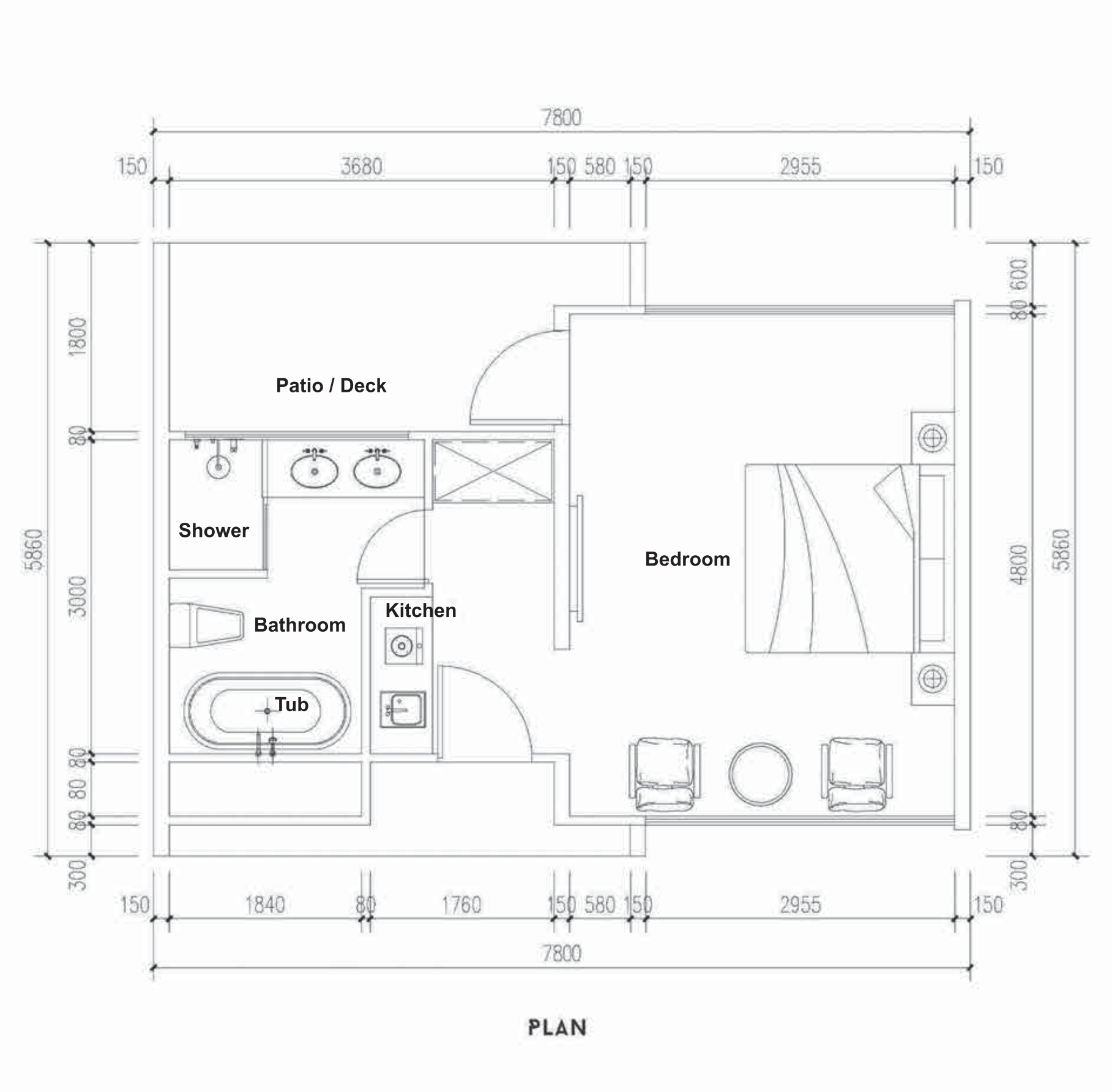


#### **INDEPENDENT BEDROOM AND BATHROOM, WET SEPARATION**

The EVO 2 includes an independent bedroom and bathroom to separate the activity and rest areas. The wet separation design of the bathroom helps to keep areas outside the bathing area dry and clean, thus to maintain a tidy and pleasant bathroom environment.



# evo 2



## **evo** \*Hybrid Prefab/ Modular Suites & Home

- \* Ideal for short term land use \*leases land
- \* Temporary Housing Solutions
- \* Short term & Long Term Low Cost Turn-Key Housing Option
- \* Transportable \*Relocatable
- \* Off Plan preDesigned unites ready in 90 days or less
- \* Can be delivered anywhere in South East Asia or North America, Europe
  
- \* 10 Year Building & Workmanship warranty
- \* 3 Year Warranty on Appliances & Electrical
- \* 10 Year LG Dualcool AC inverter \*compresor warranty
- \* 25 Year Solar panel product and performance
- \* 12 Year Solar inverter product warranty
- \* Local Installation Services provided in 25 Countries \* Inquire for more details

### **Performance & Integrity & Lifespan**

= Class 8 earthquake resistance, anti-typhoon 12, anti-noise 68DB, fire A grade, service life 50 years

**PT. EVOLUSI PESONA LESTARI**  
**Nakula Plaza, Jl Nakula, Legian**  
**Kuta, Bali 80361**  
**ask@evolutionsuites.com**  
**www.evolutionsuites.com**





CONFIGURATION EVO 2

Categories	Configurations	Brands	Standard	Luxury Edition
Frameworks / Structure	patented aviation aluminum framework system	evo	●	●
	patented connection locks		●	●
External walls	Multi-layer advance complex integrated walboard w/ built in thermal insulation (all weather)	evo	●	●
Internal walls	Multi-layer complex integrated wallboard with heat preservation and insulation functions		●	●
Doors&windows	double pane thermal tempered glass	Galuminum	●	●
	Curtain windows made of tempered glass		●	●
Floor	3 Layer Composite baseplates / Insulated		●	●

Categories	Configurations	Brands	Standard	Luxury
Stair system	Integrated stairs	EPL	*evo 3	○
Handrail	Handrail	EPL	*evo 3	○
Wall decoration	One-piece wood finish	Power Dekor	-	○
Electric / Storage Room	Integrated Outdoor room	evo	●	●
Skylight	Skylight		-	○
Outdoor leisure platform	Outdoor leisure platform		-	○
Lamps	Simple bed lamps	Renowned brand	-	○
	Ceiling lamp	Renowned brand	●	●
	Bathroom lamps	Renowned brand	●	○
	Entrance lamps	Renowned brand	●	●

**For up-to-date options and pricelist, resort options.**

Bathroom	Wash Sink	TOTO	-	-
	Independent shower	TOTO	-	●
Ventilation system	Outdoor Exhaust	evo	-	○
Kitchen	Hidden Pantry		-	○

Furniture	Standard bed frame		●	Upgrade
	Leisure sofa		-	●
	Coffee table		-	○
	Multi-functional integrated desk & chair		-	●
	Locker / Safe		-	●
	Carpet		-	●
	Acoustic curtain motor	evo	-	Option

Water heater	Water heater (Germany)	STIEBEL ELTRON	●	○
Air conditioning	AC Dual Cool SMART Eco Inverter	LG	●	●
Television	LG Smart ULTRA 43" HD	evo	-	○
Smoke exhauster	Smoke exhauster	Renowned brand	-	○
Induction cooker	Induction cooker	Renowned brand	-	○
		Renowned brand	-	○
		Renowned brand	-	○

[www.evosuites.com](http://www.evosuites.com)

Intelligence system	Smart door lock	EPL / evo	●	●
	Intelligent gateway		-	○
	Intelligent sensor		-	●
	Intelligent switch		-	○
	Intelligent background music system		-	○
	Intelligent safeguard system		-	●
	Intelligent hotel management system		-	Available
	Voice control system		-	○
Security IP - Entrance CCTV	EPL / evo	-	●	

\* The above does not contain the transportation fee, installation fee, does not include the ground foundation  
 \* A one-time order of more than 10 units for free transportation, 20 units for free shipping & installation fee for one-time order.  
 \* The above configuration is for reference only.

\*Prestige Edition request price list.



**PRECISION . SUSTAINABLE . ANYWHERE**

***evosuites.com***